

HARD HEARTED HANNAH

YELLEN,AGER,BIGELOW,BATES<Name>

Musical notation for the first line of the song, measures 1-3. The key signature is one flat (B-flat), and the time signature is common time (C). The melody consists of quarter and eighth notes. Chords are indicated above the staff: C, G7+, C, G7+, C, G7+.

In old Sa - van - nah, I said Sa - van - nah, The weath - er here is
a - - - - -

Musical notation for the second line of the song, measures 4-6. The melody continues with quarter and eighth notes. Chords are indicated above the staff: C, G7, C7, F, Fm, C, C7.

nice and warm; The cli - mate's of the south - ern brand,
- - - - -

Musical notation for the third line of the song, measures 7-9. The melody continues with quarter and eighth notes. Chords are indicated above the staff: F, Fm, C, G+, C, G7+.

But here's what I don't un - der - stand; They've got a gal there,
- - - - -

Musical notation for the fourth line of the song, measures 10-12. The melody continues with quarter and eighth notes. Chords are indicated above the staff: C, G7+, C, G7+, C, G+C.

a pret - ty gal there, Who's cold - er than an arc - tic storm; Got a
- - - - -

Musical notation for the fifth line of the song, measures 13-15. The melody continues with quarter and eighth notes. Chords are indicated above the staff: B7, Em, A7, D7, G7.

heart just like a stone; e - ven ice - men leave her a - lone, They call her
- - - - -

Musical notation for the sixth line of the song, measures 16-18. The melody continues with quarter and eighth notes. Chords are indicated above the staff: C, G+, Gm6, A7, D7.

Hard Heart - ed Han - nah, the vamp of Sa - van - nah, the mean - est gal in town;
Hard Heart - ed Han - nah, the vamp of Sa - van - nah, the mean - est gal in town;

20

G7

Leath - er is tough but han - nah's heart is tough - er;
Talk of your cold, re - fig - er - at - ing Mam - mas,

23

C**Ab7****G7****C****G+**

She's a gal who loves to see men suf - fer! to tease 'em and thrill 'em, to
Broth - er, she's the po - lar bear's pa - jam - as! To tease 'em and thrill 'em to

26

A7**Dm****E7****Am****C7**

tor - ture and kill 'em Is her de - light, they say, I
tor - ture and kill 'em Is her de - light, they say An

29

F**F# dim****C****Gm6**

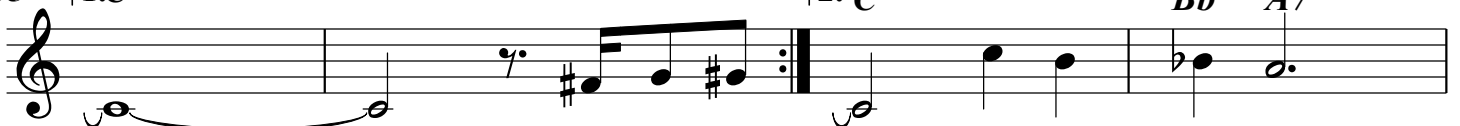
saw her at the sea-shore with a great big pan; There was han - nah pour - ing wa - ter on a
ev - 'ning spent with Han - nah sit - ting on your knees' Is like trav - 'ling thru A - las - ka in your

32

A7**D7****Dm7****G7**

drown - ing man, she's HARD HEART - ED HAN - NAH, The Vamp of Sa - van - nah G. A.
B. V. D's; She's HARD HEART - ED HAN - NAH, The Vamp of Sa - van - nah G. A.

35

1. **C**2. **C****Bb****A7**

they call her

39

D7**Dm7****G7****C**