

CHIM CHIM CHEE-EE

SHERMAN / SHERMAN

G7



5

Cm

G7

Cm

G+



CHIM CHIM - IN - NEY. CHIM CHIM - IN - EY.

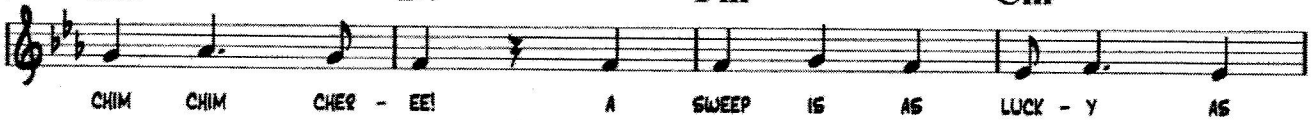
9

Cm

D7

Fm

Cm



CHIM CHIM CHEE - EE! A SWEEP IS AS LUCK - Y AS

13

D7

G7

Cm

G+



LUCK - Y CAN BE. CHIM CHIM - IN - EY. CHIM CHIM - IN - EY

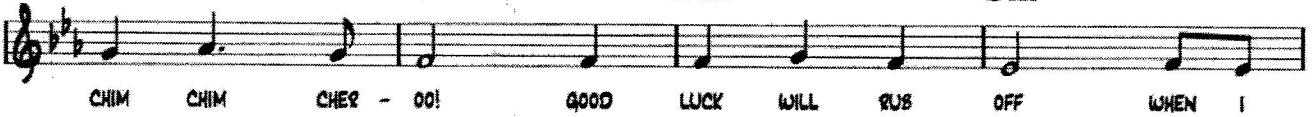
17

Cm

F

Fm

Cm



CHIM CHIM CHEE - EE! GOOD LUCK WILL RUB OFF WHEN I

21

G7

Cm

Fm

Cm



SHAKES HANDS WITH YOU OR SLOW ME A KISS AND

25

G7

Cm



THAT'S LUCK - Y TOO

29



MOREY

WHISTLE WHILE YOU WORK

CHURCHILL

1 C

WHIS - TLE WHILE YOU WORK (WHISTLE) - - - - PUT

5 Dm G7 Dm G7 Dm G7 C

ON THAT GAIN AND START RIGHT IN TO WHIS - TLE LOUD AND LONG. JUST

9 C

HUM A MER - RY TUNE. (HUM - - - -) JUST

13 Dm G7 Dm G7 Dm G7 C

DO YOUR BEST AND TAKE A REST AND SING YOUR - SELF A SONG. WHEN

17 F

THERE'S TOO MUCH TO DO. DON'T LET IT BOTHER YOU. FOR

21 Fm C C° Dm G7

GET YOUR TROU - BLE TRY TO BE JUST LIKE THE CHEER - FUL CHICK - A - DEE. AND

25 C

WHIS - TLE WHILE YOU WORK. (WHISTLE - - - -) COME

29 Dm G7 Dm G7 Dm G7 C

ON. GET SMART. TUNE UP AND START TO WHIS - TLE WHILE YOU WORK. GLIS