

Sailing Down the Chesapeake Bay

G

1913

D7

G

Track 1

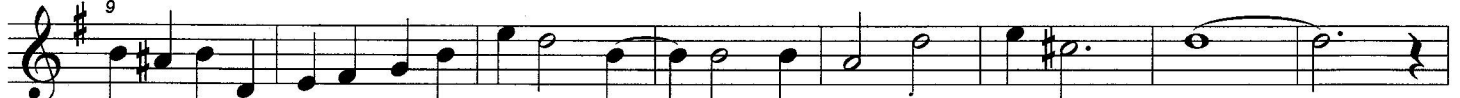


'Round the bend I see the steam-er com-in', dear, head-in' here, to this pier.

G

D A7

D



If you hur-ry we will make it, ne-ver fear, on the old Do - min-ion Line.

D7

G

B7

Em



Ain't she sail-ing pret-ty as she hugs the shore, steam-ing for Bal-ti - more.

A7

D

A7

D

E7

A7

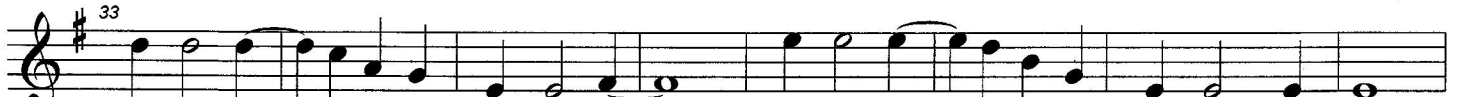
D B C C#



Hear the padd-les turn -in' hear the water churr-in' she's the queen of Ches-a-peake Bay!

D7

G



Come on Nan- cy put your best dress on. Come on Nan- cy 'fore the steam-boat's gone.

D7

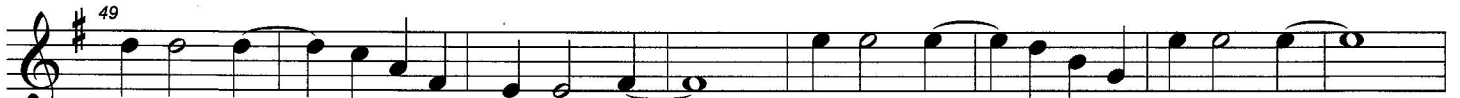
G



Ev-rything is lovely on the Ches-a-peake Bay. All a-board for Bal-ti-more and if we're late they'll all be sore,

D7

G



now look here Cap-tain let us catch the boat. We can't swim and lis-ten we can't float!

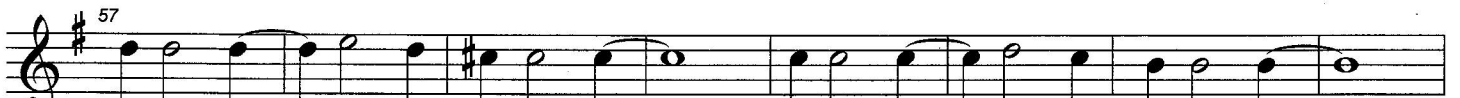
G7

G0

C7

D7

G



Ban-jos strum- min' a good old tune, up on deck is the place to spoon.

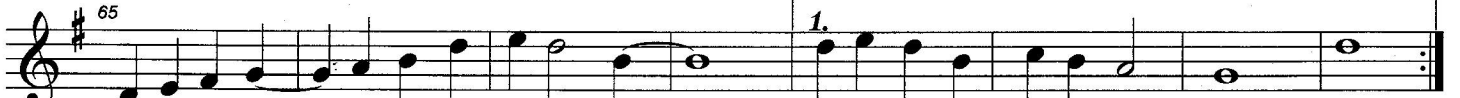
G

G

D7

G

D7



Cuddle up close beneath the sil-v'ry moon, sailing down the Ches-a-peake Bay.

G

D7

G

D7

G

D7

G



sailing down the Ches-a-peake, all a-board the Ches-a-peake, sailing down the Ches-a-peake Bay.